

# WACONIA PARK BOARD MEETING AGENDA



Thursday, November 21, 2024  
6:30 PM

## VISION STATEMENT

A thriving, connected community with deep roots: a great place to live for a lifetime.

## MISSION STATEMENT

A city that leads, serves, and governs to enhance the quality of life for all community members.

CHAIR: LACEY SHAW  
MEMBER: ADAM HEGEHOLZ  
MEMBER: THOMAS ADAMINI  
MEMBER: LEAH SOLTIS  
MEMBER: BEN STRASHEIM  
ALTERNATE: TAMI PETERSON

---

**NOTE: TO ENSURE THAT YOU ARE PRESENT FOR ITEMS OF INTEREST, PLEASE BE PRESENT AT 6:30 P.M.**

Those with items on the agenda should reach out to their staff contact. Others who wish to participate in the meeting, please contact the Community Development Director at 952-442-3106 or [lbraaten@waconia.org](mailto:lbraaten@waconia.org) to make certain that you are called upon during the meeting.

1. **Call Meeting to Order**
2. **Approval of Agenda**
3. **Approval of Minutes**
  - 1) [Approve September 19th, 2024 Meeting Minutes](#)  
Motion to approve meeting minutes of September 19th, 2024.
4. **Regular Business**
  - 1) [Sudheimer Park Phasing Plan Update](#)  
Discussion & Direction
  - 2) [Park Playground CIP](#)  
Review of short and long term playground upgrade recommendations.
5. **Staff Park Items Update**
6. **Board Updates & Questions**
7. **Adjourn**

**Upcoming Meetings**



**REQUEST FOR CITY COUNCIL ACTION**

<b>Meeting Date:</b>		November 21, 2024			
<b>Item Name:</b>		Approve September 19th, 2024 Meeting Minutes			
<b>Originating Department:</b>		Administration			
<b>Presented by:</b>		Shane Fineran			
<b>Previous Council Action</b> (if any):					
<b>Item Type (X only one):</b>	Consent	X	Regular Session		Discussion Session
<b>RECOMMENDATIONS/COUNCIL ACTION/MOTION REQUESTED</b> <i>(Include motion in proper format.)</i>					
Motion to approve meeting minutes of September 19th, 2024.					
<b>EXPLANATION OF AGENDA ITEM</b> <i>(Include a description of background, benefits, and recommendations.)</i>					
<b>Attachments:</b>					
1. <a href="#">9.19.24 Park Board Minutes.pdf</a>					
<b>FINANCIAL IMPLICATIONS:</b>			<b>ADVISORY BOARD RECOMMENDATIONS:</b>		
Funding Sources & Uses:					
Budget Information:			Planning Commission		
_____ Budgeted			Parks and Recreation Board		
_____ Non Budgeted			Safari Island Advisory Board		
_____ Amendment Required			Other		

**CITY OF WACONIA**  
**MINUTES OF SCHEDULED MEETING**  
**PARKS & RECREATION BOARD**  
**September 19, 2024**

Pursuant to due call and notice thereof, the Regular Meeting of the Waconia Parks & Recreation Board in the Maple Conference Room was called to order at 6:30 p.m. by Shaw.

**Park Board Members Present:** Lacey Shaw, Ben Strasheim, Tom Adamini, Adam Hegeholz, Leah Soltis. Tami Peterson - Alternate

**Park Board:** None

**Council Liaison:** Randy Sorensen

**Staff Present:** Shane Fineran, Mike Mawdsley

**Guests:** Darrel Radde, Mike Madsen, Tad Kreun, Natalie Barrett, Teresa Green

**Adopt Agenda**

Hegeholz made a motion to approve the agenda, seconded by Soltis. All in favor.

**Approval of Minutes from August 15<sup>th</sup>, 2024 Meeting**

Hegeholz made a motion to approve the meeting minutes, seconded by Soltis, All in favor.

**Regular Business**

1. Cedar Point Park Pickleball Courts

Darrel Radde, presenting on behalf of area pickleball players presented an alternate concept of adding additional pickleball courts to the Cedar Point Park court surfacing. This alternative would have kept the existing tennis courts striping and added 4 additional, for a total of six pickleball courts where play would be accommodated by utilization of portable nets. The pickleball players were seeking support from the park board to bring a recommendation to the City Council. The pickleball players noted that they have up to \$15,000 in pledged funds to support the project. Previous staff estimates put the resurfacing and striping of the courts and nets at \$25,000.

The Park Board took public comment from interested residents both in favor and in opposition to the proposal.

Adamini made a motion to recommend the resurfacing of the courts to accommodate 4 pickleball courts. There was no 2<sup>nd</sup>, Motion failed.

Strasheim made a motion to recommend the resurfacing of the courts to accommodate 6 pickleball courts, 2<sup>nd</sup> by Adamini. Strasheim/Adamini voted in favor; Soltis, Hegehols, Shaw voted in opposition. Motion failed.

No recommendation or support made to the City Council.

**Staff Updates**

Mike Mawdsley, Park Maintenance Supervisor provided an update to the fall maintenance activities occurring through the community. Significant tree work has been ongoing and in response to the late August wind storm. Mawdsley noted that 35 boulevard trees were lost.

**Adjournment**

Adamini motion to adjourn. Hegeholz second. All in favor. Adjourn at 7:45 p.m.

Respectfully Submitted,

A handwritten signature in black ink, appearing to read "Shane Fineran". The signature is stylized with a large, looping initial "S" and a long, sweeping underline.

Shane Fineran  
City Administrator



**REQUEST FOR CITY COUNCIL ACTION**

<b>Meeting Date:</b>	November 21, 2024
<b>Item Name:</b>	Sudheimer Park Phasing Plan Update
<b>Originating Department:</b>	Administration
<b>Presented by:</b>	Shane Fineran

**Previous Council Action** (if any):

<b>Item Type (X only one):</b>	Consent		Regular Session		Discussion Session	X
--------------------------------	---------	--	-----------------	--	--------------------	---

**RECOMMENDATIONS/COUNCIL ACTION/MOTION REQUESTED** *(Include motion in proper format.)*

Discussion & Direction

**EXPLANATION OF AGENDA ITEM** *(Include a description of background, benefits, and recommendations.)*

In August the Park Board reviewed and approved the final master plan for Sudheimer Park. Staff took the various elements of the master plan and as part of the Capital Investment Planning process developed a phasing plan for investment. While the phasing plan does not offer complete buildout of the master plan it brings to completion about 90% of all of the elements.

Phase 1 - 2027 \$185,000  
(highlighted yellow)  
This would include items A, F, G and funds for L. This is development of the primary north/south bitumouns trail, limestone trail connecting CSAH 10,grading, grubbing, and north & south entrance trail head nodes as well as some site amenities.

Phase 2 - 2029 \$175,000  
(highlighted pink)  
This would include items B, J, and K. This is development of additional limestone trail along the southern edge creating a loop back north and adding natural play area and fitness features as well as some additional site amenities.

Phase 3 - 2030 \$180,000  
(highlighted green)  
This would include grubbing, grading, and limestone trail and boardwalk across the wet areas of the central part of the park and creating an additional loop along the east and north of the park.

The elements left out of the phasing plan include small tertiary trail development that could be completed over time by staff and or community based project by groups like the Boy/Girl Scouts, Environmental Club, or other seeking a community project. Also left out of the phasing plan is the Deerfield Trail Head and supporting work for an additional board walk and sidewalk/trail connection along Sparrow. Additional investigation as to the constructability due to grades in the area needs to be had as well as investigate opportunity to coordinate with future road reconstruction along Sparrow Road.

- Attachments:**
1. [2024-10-31 Sudheimer Park.pdf](#)
  2. [Sudheimer Estimate w phasing.pdf](#)

<b>FINANCIAL IMPLICATIONS:</b> Funding Sources & Uses: PIR Fund>Cash & Bonds	<b>ADVISORY BOARD RECOMMENDATIONS:</b>
--	--

Budget Information:	Planning Commission	
<input checked="" type="checkbox"/> Budgeted	Parks and Recreation Board	
<input type="checkbox"/> Non Budgeted	Safari Island Advisory Board	
<input type="checkbox"/> Amendment Required	Other	



Real People. Real Solutions.

2638 Shadow Lane  
Suite 200  
Chaska, MN 55318-1172

Ph: (952) 448-8838  
Fax: (952) 448-8805  
Bolton-Menk.com

October 31, 2024

City of Waconia  
Attn: Jon Haukaas  
310 10<sup>th</sup> Street East  
Waconia, MN 55387

**RE: Sudheimer Park Improvements  
Project Summary**

Dear Mr. Haukaas,

Bolton & Menk was tasked with developing a master plan and associated cost estimates to guide the future development of Sudheimer Park. Jonathan Nelsen, a Senior Landscape Architect with Bolton & Menk who has completed planning efforts for many park projects, led this effort in collaboration with City staff and the Waconia Park Board. As requested, this submittal is a summary of the steps that have been completed throughout the duration of the master planning process.

Property Background:

The location of this park is south of Industrial Blvd / CSAH 10, north of Sparrow Road, and west of Hwy 284 as shown below.



This property is landlocked. However, the recent development of the Otto Apartments to the north has allowed for public parking and an access point near the northwest corner of the property. This development also contains an easement for a future trail connection from CSAH 10 to near the northeast corner of the property. The property is largely covered by woodlands and wetlands. The general goal of the development of this park is to maintain its existing natural features, while simultaneously enhancing connectivity throughout the park and surrounding neighborhoods and celebrating the local environment and Waconia’s history.

Completed Steps:

Like many planning projects, the process began by analyzing the existing site and conditions, reviewing alternatives and homing in on a preferred concept plan, and ultimately developing a pathway to achieving that plan through a realistic phasing plan. Three meetings were held with the Park Board throughout the planning process. The following is a timeline that identifies key steps in the master planning process:

- Winter 2023-24: Evaluated the Property & Determined Natural Park Amenity Options
- March 2024: Visited Site to Review Park Property & Document Existing Conditions
- March 2024: Met with the Park Board & Reviewed Existing Conditions, Opportunities at the Park, and Imagery of Amenity Options
- Spring 2024: Developed 3 Unique Park Concept Plans
- May 2024: Met with the Park Board & Reviewed the Park Concept Plans
- Summer 2024: Based on Feedback, Developed Preferred Concept Plan & Associated Preliminary Cost Estimate
- August 2024: Met with the Park Board & Finalized Preferred Project Phasing
- September 2024: Finalized Concept Plan & Split Cost Estimate into Phases

Attached for your reference is the final concept plan along with the resultant cost estimate.

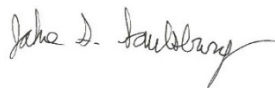
Next Steps:

The Sudheimer Park Master Plan and associated phasing plan will be used to update the City’s CIP, ensuring funds can be allocated to make parts of the plan a reality. This Plan should also be used to solicit funding through competitive grant programs such as the State of Minnesota SHIP grant, DNR Outdoor Recreation Grant, and others as deemed appropriate. As funding becomes available, projects should be completed in an appropriate order as identified in the overall phasing plan.

I am available to discuss this project in more detail at your convenience.

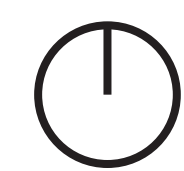
Sincerely,

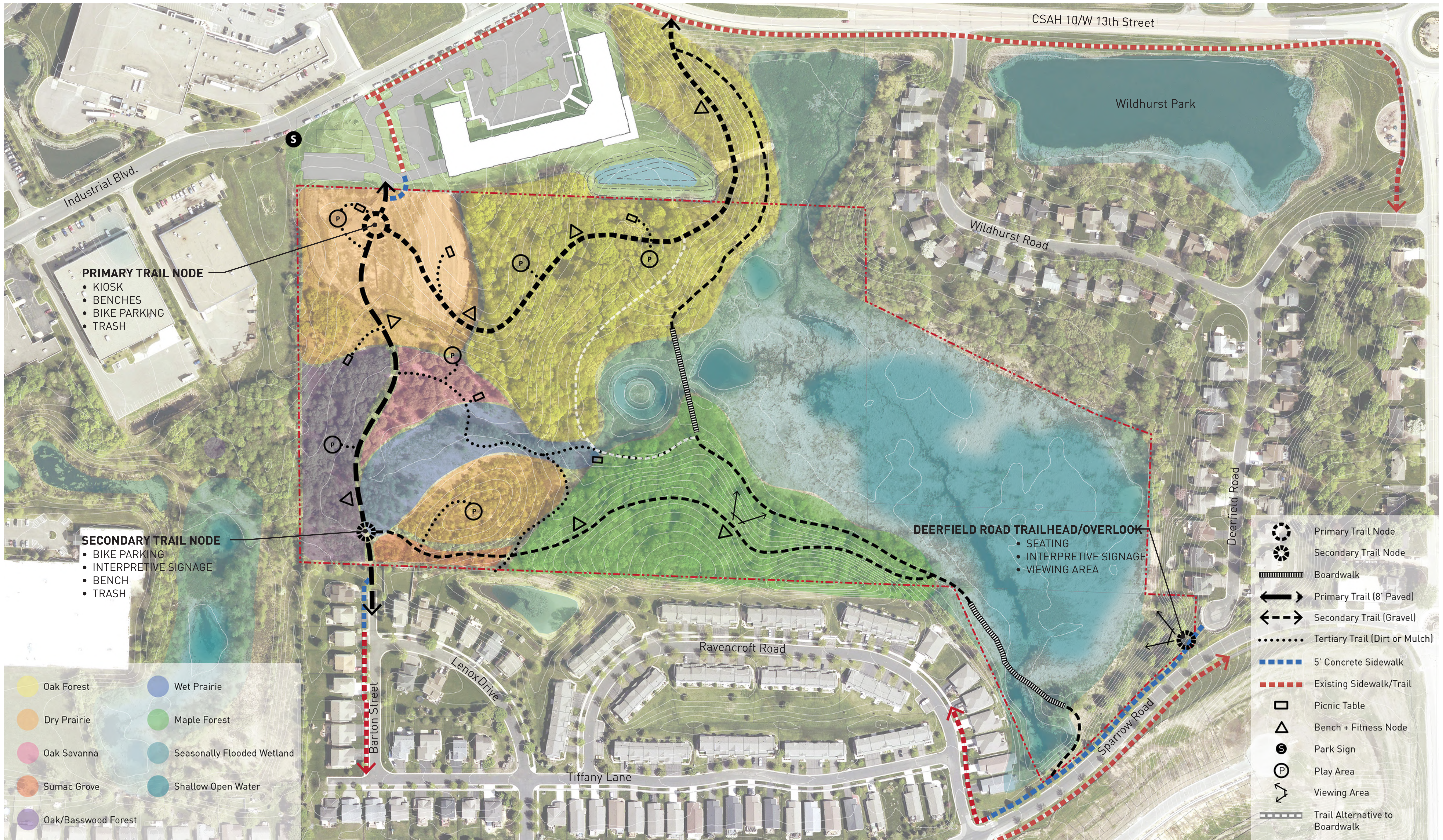
**Bolton & Menk, Inc.**



**Jake Saulsbury, P.E.**

Cc: Shane Fineran, City Administrator  
Jonathan Nelsen, Bolton & Menk, Senior Landscape Architect





**PRIMARY TRAIL NODE**

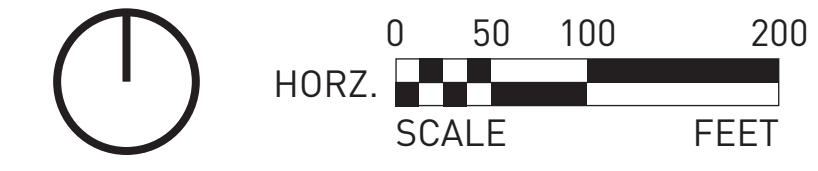
- KIOSK
- BENCHES
- BIKE PARKING
- TRASH

**SECONDARY TRAIL NODE**

- BIKE PARKING
- INTERPRETIVE SIGNAGE
- BENCH
- TRASH

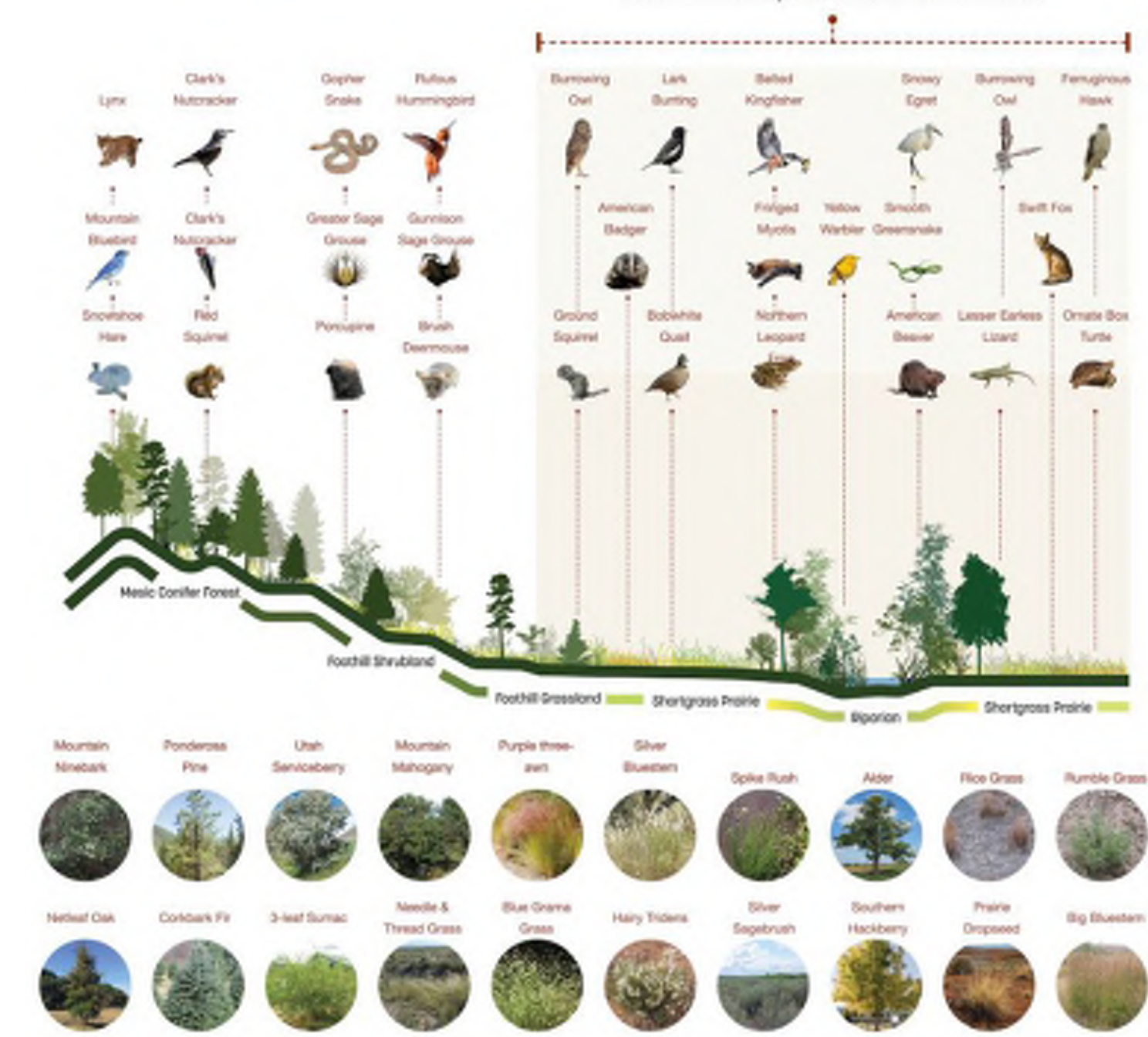
**DEERFIELD ROAD TRAILHEAD/OVERLOOK**

- SEATING
- INTERPRETIVE SIGNAGE
- VIEWING AREA



# THE WEB OF NATURE

Interpretive themes about the native plants and animals in Sudheimer Park



Sasaki, University of Colorado Boulder 2021 Master Plan



Giro d'Alì, Val di Fiemme, Italy

Scavenger hunt to find nodes about the different plant and animals species found within the park



Trail Book, Farrington Nature Linc



Sensory Trail, Pretty Pony Pastures, Michigan



I Spy Nature Scavenger Hunt for Kids



Ten x Ten, Wisdom Woods Vision Plan



# STORIES OF WACONIA

Interpretive themes about the history of Waconia and Sudheimer Park



Image Credit: Carver County Historical Society



Image Credit: Minnesota Historical Society



Damon Farber, Vesterheim Museum Outdoor Landscape

Trail experiences and scavenger hunt can tell the stories of Waconia and the people who have called it home.



Schoneberg Nature Park by Tactile Studio



Cannenburgh Castle by Nine



Nature to Play Water Troughs by Kaplan Early Learning

CITY OF WACONIA STANDARD PARK SIGNAGE



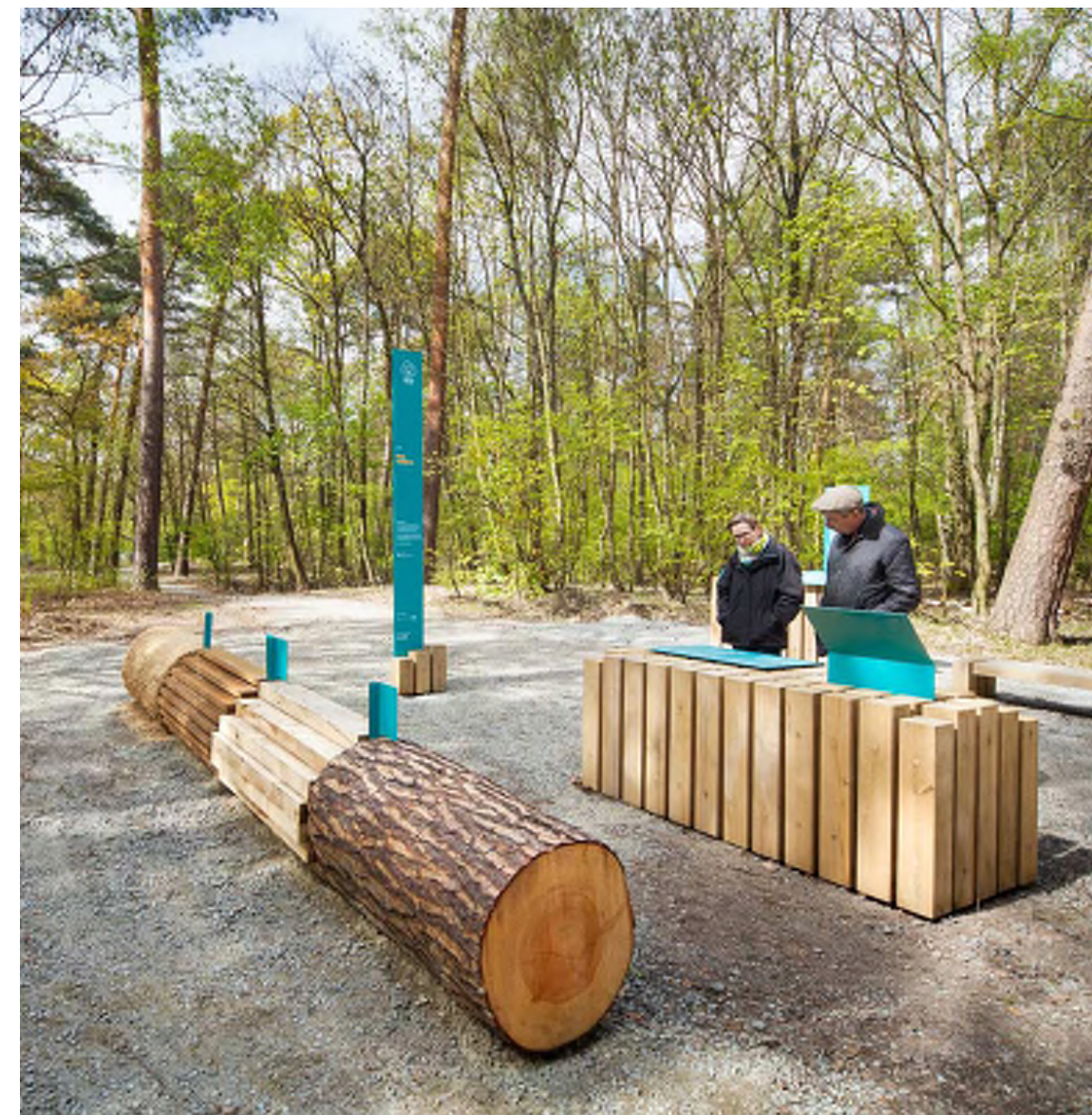
INTERPRETIVE + WAYFINDING SIGNAGE



Magstadt Nature Trail



Waymarker by NatureSignDesign



Wald, Berlin, Klima by hochC Landscape Architects



Brodwin Village by Gewerkdesign



Barbara Jordan Post Office by Formation



Henry Kaufmann Campgrounds by C&G Partners

KIOSK STYLE SIGNAGE



The Meadow Garden by Gecko Group



Pavilions by Plant Architect



Henry Kaufmann Campgrounds by C&G Partners



Governor's Island by Pentagram

NATURAL MATERIALS



MANUFACTURED MATERIALS





Minnesota River National Wildlife Refuge, Bloomington, MN



Fawn Crossing Play Area, Whitetail Woods Regional Park, Farmington, MN



Minnesota River National Wildlife Refuge, Bloomington, MN



MacRae Park, Des Moines, IA



Fit-Trail, Lowes Creek County Park, Eau Claire, WI



Health Trail, Grunewald Forest, Berlin, Germany



Fit-Trail, Lowes Creek County Park, Eau Claire, WI



Outdoor Aventure Centre, Stamford, United Kingdom



Fit-Trail, Lowes Creek County Park, Eau Claire, WI



Health Trail, Grunewald Forest, Berlin, Germany



PRIMARY TRAIL (PAVED ASPHALT CONSTRUCTION (8' WIDE))



SECONDARY TRAIL (CRUSHED LIMESTONE CONSTRUCTION (5' WIDE))



TERTIARY TRAIL (DIRT OR WOOD CHIP CONSTRUCTION (2' WIDE))



TIMBER BOARDWALK (8' WIDE) WITH OPTIONAL BUMP-OUTS FOR SEATING/VIEWING

# ENGINEER'S ESTIMATE

CITY OF WACONIA, MN  
 SUDHEIMER PARK - PREFERRED CONCEPT PLAN  
**PRELIMINARY COST OPINION**



Real People. Real Solutions.

ITEM NO.	ITEM	ESTIMATED QUANTITY	UNIT	UNIT PRICE	TOTAL AMOUNT
<b>A</b>	<b>PHASE 1 IMPROVEMENTS</b>				
1	PRIMARY TRAIL (BITUMINOUS TRAIL, 8' WIDTH)	980	LIN FT	\$40	\$39,200
2	TEMP. SECONDARY TRAIL (CRUSHED LIMESTONE, 8' WIDTH)	1500	LIN FT	\$32	\$48,000
3	GENERAL TRAIL GRADING	1	LUMP SUM	\$12,000	\$12,000
4	TREE & BRUSH REMOVAL	1	LUMP SUM	\$25,000	\$25,000
	<b>TOTAL PHASE 1 IMPROVEMENT COST</b>				<b>\$124,200</b>
<b>B</b>	<b>PHASE 2 IMPROVEMENTS</b>				
1	SECONDARY TRAIL (CRUSHED LIMESTONE, 5' WIDTH)	2950	LIN FT	\$20	\$59,000
2	GENERAL TRAIL GRADING	1	LUMP SUM	\$10,000	\$10,000
3	TREE & BRUSH REMOVAL	1	LUMP SUM	\$25,000	\$25,000
	<b>TOTAL PHASE 2 IMPROVEMENT COST</b>				<b>\$94,000</b>
<b>C</b>	<b>PHASE 3 IMPROVEMENTS</b>				
1	SECONDARY TRAIL (CRUSHED LIMESTONE, 5' WIDTH)	820	LIN FT	\$20	\$16,400
2	BOARDWALK CONNECTION A: BOARDWALK STRUCTURE W/ HELICAL PILES	230	LIN FT	\$400	\$92,000
3	BOARDWALK CONNECTION A: CONCRETE ABUTMENTS (2)	2	EACH	\$5,000	\$10,000
4	GENERAL TRAIL GRADING	1	LUMP SUM	\$8,000	\$8,000
5	TREE & BRUSH REMOVAL	1	LUMP SUM	\$25,000	\$25,000
	<b>TOTAL PHASE 3 IMPROVEMENT COST</b>				<b>\$151,400</b>
<b>D</b>	<b>ADDITIONAL TRAIL &amp; CIRCULATION IMPROVEMENTS</b>				
1	4" CONCRETE WALK (5' WIDTH)	870	LIN FT	50	\$43,500
2	TERTIARY TRAIL (DIRT TRAIL)	1700	LIN FT	\$8	\$13,600
	<b>TOTAL ADDITIONAL TRAIL &amp; CIRCULATION IMPROVEMENT COST</b>				<b>\$57,100</b>
<b>E</b>	<b>BOARDWALK CONNECTION B (CONNECTION TO EAST)</b>				
1	ALTERNATIVE 1: WOOD DECKING ON HELICAL PILES (8' WIDE)	310	LIN FT	\$400	\$124,000
2	CONCRETE ABUTMENTS (2 PER BOARDWALK SEGMENT)	2	EACH	\$5,000	\$10,000
	<b>TOTAL BOARDWALK CONNECTION B COST</b>				<b>\$134,000</b>
	<i>ALTERNATIVE 2 WOOD DECKING ON FLOATS (8' WIDE)</i>	310	LIN FT	\$325	\$100,750
<b>F</b>	<b>PRIMARY NODE/TRAILHEAD</b>				
1	4" CONCRETE WALK	400	SQ FT	\$10	\$4,000
2	INFORMATIONAL KIOSK	1	EACH	\$6,000	\$6,000
3	BENCHES	2	EACH	\$1,800	\$3,600
4	TRASH RECEPTACLE	1	EACH	\$1,200	\$1,200
5	BICYCLE RACKS	2	EACH	\$800	\$1,600
	<b>TOTAL PRIMARY NODE/TRAILHEAD COST</b>				<b>\$16,400</b>
<b>G</b>	<b>SECONDARY NODE/TRAILHEAD</b>				
1	4" CONCRETE WALK	240	SQ FT	\$10	\$2,400
2	INTERPRETIVE SIGN	1	EACH	\$2,000	\$2,000
3	BENCH	1	EACH	\$1,800	\$1,800
4	TRASH RECEPTACLE	1	EACH	\$1,200	\$1,200
5	BICYCLE RACK	1	EACH	\$800	\$800
	<b>TOTAL SECONDARY NODE/TRAILHEAD COST</b>				<b>\$8,200</b>
<b>H</b>	<b>DEERFIELD ROAD TRAILHEAD/OVERLOOK</b>				
1	CURB REMOVAL	10	LIN FT	\$10	\$100
2	ADA PED RAMP (6" CONC. WALK)	30	SQ FT	\$14	\$420
3	CONCRETE PAD (10'X6')	60	SQ FT	\$10	\$600
4	BENCH	1	EACH	\$1,800	\$1,800
5	INTERPRETIVE SIGN	1	EACH	\$2,000	\$2,000
6	RETAINING WALL	30	SQ FT	\$120	\$3,600
	<b>TOTAL DEERFIELD ROAD TRAILHEAD/OVERLOOK COST</b>				<b>\$8,520</b>

<b>I CULVERT @ DRAINAGE-WAY</b>				
1	18" RCP CULVERT	1 LUMP SUM	\$3,000	\$3,000
2	RIP RAP	3 TON	\$100	\$300
3	EXCAVATION/SITE PREP	1 LUMP SUM	\$3,000	\$3,000
<b>TOTAL DEERFIELD ROAD TRAILHEAD/OVERLOOK COST</b>				<b>\$14,820</b>
<b>J NATURAL PLAYGROUND STATION (PLAY AREA)</b>				
1	MULCH SURFACING	9 CU YD	\$90	\$810
2	PLAY FEATURE FURNISHING	1 EACH	\$3,000	\$3,000
<i>NATURAL PLAYGROUND STATION COSTS PER EACH</i>				<i>\$3,810</i>
<b>TOTAL NATURAL PLAYGROUND STATION COSTS (6 TOTAL)</b>				<b>\$22,860</b>
<b>K FITNESS TRAIL FEATURES</b>				
1	FEATURE SIGN	1 EACH	\$200	\$200
2	FITNESS FEATURES	1 EACH	\$1,500	\$1,500
3	MULCH SURFACING (ASSUME 3.5 CY PER LOCATION)	3.5 CUBIC YARDS	\$90	\$315
4	4"x4" TREATED WOOD EDGER	1 EACH	\$250	\$250
<i>TOTAL FITNESS TRAIL FEATURE COSTS PER EACH</i>				<i>\$2,265</i>
<b>TOTAL FITNESS TRAIL FEATURE COSTS (7 TOTAL)</b>				<b>\$15,855</b>
<b>L MISCELLANEOUS PARK FEATURES</b>				
1	PARK SIGN (MATCH CITY STANDARD)	1 EACH	\$6,000	\$6,000
2	TRAIL BENCH (ON 4'X8' CONCRETE PAD)	7 EACH	\$2,000	\$14,000
3	PICNIC TABLE (ON 8'X8' CONCRETE PAD)	6 EACH	\$3,000	\$18,000
4	INTERPRETIVE SIGNS ALONG TRAIL	3 EACH	\$1,800	\$5,400
<b>TOTAL MISCELLANEOUS PARK FEATURES COST</b>				<b>\$43,400</b>
<b>SUBTOTAL</b>				<b>\$690,755</b>
20% CONSTRUCTION CONTINGENCY				\$138,151.0
20% DESIGN, ENGINEERING + CONSTRUCTION ADMINISTRATION				\$165,781.20
<b>TOTAL ESTIMATED PROJECT COST</b>				<b>\$994,687</b>

# ENGINEER'S ESTIMATE

CITY OF WACONIA, MN  
 SUDHEIMER PARK - PREFERRED CONCEPT PLAN  
**PRELIMINARY COST OPINION**



Real People. Real Solutions.

ITEM NO.	ITEM	ESTIMATED QUANTITY	UNIT	UNIT PRICE	TOTAL AMOUNT
<b>A</b>	<b>PHASE 1 IMPROVEMENTS</b>				
1	PRIMARY TRAIL (BITUMINOUS TRAIL, 8' WIDTH)	980	LIN FT	\$40	\$39,200
2	TEMP. SECONDARY TRAIL (CRUSHED LIMESTONE, 8' WIDTH)	1500	LIN FT	\$32	\$48,000
3	GENERAL TRAIL GRADING	1	LUMP SUM	\$12,000	\$12,000
4	TREE & BRUSH REMOVAL	1	LUMP SUM	\$25,000	\$25,000
	<b>TOTAL PHASE 1 IMPROVEMENT COST</b>				<b>\$124,200</b>
<b>B</b>	<b>PHASE 2 IMPROVEMENTS</b>				
1	SECONDARY TRAIL (CRUSHED LIMESTONE, 5' WIDTH)	2950	LIN FT	\$20	\$59,000
2	GENERAL TRAIL GRADING	1	LUMP SUM	\$10,000	\$10,000
3	TREE & BRUSH REMOVAL	1	LUMP SUM	\$25,000	\$25,000
	<b>TOTAL PHASE 2 IMPROVEMENT COST</b>				<b>\$94,000</b>
<b>C</b>	<b>PHASE 3 IMPROVEMENTS</b>				
1	SECONDARY TRAIL (CRUSHED LIMESTONE, 5' WIDTH)	820	LIN FT	\$20	\$16,400
2	BOARDWALK CONNECTION A: BOARDWALK STRUCTURE W/ HELICAL PILES	230	LIN FT	\$400	\$92,000
3	BOARDWALK CONNECTION A: CONCRETE ABUTMENTS (2)	2	EACH	\$5,000	\$10,000
4	GENERAL TRAIL GRADING	1	LUMP SUM	\$8,000	\$8,000
5	TREE & BRUSH REMOVAL	1	LUMP SUM	\$25,000	\$25,000
	<b>TOTAL PHASE 3 IMPROVEMENT COST</b>				<b>\$151,400</b>
<b>D</b>	<b>ADDITIONAL TRAIL &amp; CIRCULATION IMPROVEMENTS</b>				
1	4" CONCRETE WALK (5' WIDTH)	870	LIN FT	50	\$43,500
2	TERTIARY TRAIL (DIRT TRAIL)	1700	LIN FT	\$8	\$13,600
	<b>TOTAL ADDITIONAL TRAIL &amp; CIRCULATION IMPROVEMENT COST</b>				<b>\$57,100</b>
<b>E</b>	<b>BOARDWALK CONNECTION B (CONNECTION TO EAST)</b>				
1	ALTERNATIVE 1: WOOD DECKING ON HELICAL PILES (8' WIDE)	310	LIN FT	\$400	\$124,000
2	CONCRETE ABUTMENTS (2 PER BOARDWALK SEGMENT)	2	EACH	\$5,000	\$10,000
	<b>TOTAL BOARDWALK CONNECTION B COST</b>				<b>\$134,000</b>
	<i>ALTERNATIVE 2 WOOD DECKING ON FLOATS (8' WIDE)</i>	310	LIN FT	\$325	\$100,750
<b>F</b>	<b>PRIMARY NODE/TRAILHEAD</b>				
1	4" CONCRETE WALK	400	SQ FT	\$10	\$4,000
2	INFORMATIONAL KIOSK	1	EACH	\$6,000	\$6,000
3	BENCHES	2	EACH	\$1,800	\$3,600
4	TRASH RECEPTACLE	1	EACH	\$1,200	\$1,200
5	BICYCLE RACKS	2	EACH	\$800	\$1,600
	<b>TOTAL PRIMARY NODE/TRAILHEAD COST</b>				<b>\$16,400</b>
<b>G</b>	<b>SECONDARY NODE/TRAILHEAD</b>				
1	4" CONCRETE WALK	240	SQ FT	\$10	\$2,400
2	INTERPRETIVE SIGN	1	EACH	\$2,000	\$2,000
3	BENCH	1	EACH	\$1,800	\$1,800
4	TRASH RECEPTACLE	1	EACH	\$1,200	\$1,200
5	BICYCLE RACK	1	EACH	\$800	\$800
	<b>TOTAL SECONDARY NODE/TRAILHEAD COST</b>				<b>\$8,200</b>
<b>H</b>	<b>DEERFIELD ROAD TRAILHEAD/OVERLOOK</b>				
1	CURB REMOVAL	10	LIN FT	\$10	\$100
2	ADA PED RAMP (6" CONC. WALK)	30	SQ FT	\$14	\$420
3	CONCRETE PAD (10'X6')	60	SQ FT	\$10	\$600
4	BENCH	1	EACH	\$1,800	\$1,800
5	INTERPRETIVE SIGN	1	EACH	\$2,000	\$2,000
6	RETAINING WALL	30	SQ FT	\$120	\$3,600
	<b>TOTAL DEERFIELD ROAD TRAILHEAD/OVERLOOK COST</b>				<b>\$8,520</b>

<b>I CULVERT @ DRAINAGE-WAY</b>				
1	18" RCP CULVERT	1 LUMP SUM	\$3,000	\$3,000
2	RIP RAP	3 TON	\$100	\$300
3	EXCAVATION/SITE PREP	1 LUMP SUM	\$3,000	\$3,000
<b>TOTAL DEERFIELD ROAD TRAILHEAD/OVERLOOK COST</b>				<b>\$14,820</b>
<b>J NATURAL PLAYGROUND STATION (PLAY AREA)</b>				
1	MULCH SURFACING	9 CU YD	\$90	\$810
2	PLAY FEATURE FURNISHING	1 EACH	\$3,000	\$3,000
<i>NATURAL PLAYGROUND STATION COSTS PER EACH</i>				<i>\$3,810</i>
<b>TOTAL NATURAL PLAYGROUND STATION COSTS (6 TOTAL)</b>				<b>\$22,860</b>
<b>K FITNESS TRAIL FEATURES</b>				
1	FEATURE SIGN	1 EACH	\$200	\$200
2	FITNESS FEATURES	1 EACH	\$1,500	\$1,500
3	MULCH SURFACING (ASSUME 3.5 CY PER LOCATION)	3.5 CUBIC YARDS	\$90	\$315
4	4"x4" TREATED WOOD EDGER	1 EACH	\$250	\$250
<i>TOTAL FITNESS TRAIL FEATURE COSTS PER EACH</i>				<i>\$2,265</i>
<b>TOTAL FITNESS TRAIL FEATURE COSTS (7 TOTAL)</b>				<b>\$15,855</b>
<b>L MISCELLANEOUS PARK FEATURES</b>				
1	PARK SIGN (MATCH CITY STANDARD)	1 EACH	\$6,000	\$6,000
2	TRAIL BENCH (ON 4'X8' CONCRETE PAD)	7 EACH	\$2,000	\$14,000
3	PICNIC TABLE (ON 8'X8' CONCRETE PAD)	6 EACH	\$3,000	\$18,000
4	INTERPRETIVE SIGNS ALONG TRAIL	3 EACH	\$1,800	\$5,400
<b>TOTAL MISCELLANEOUS PARK FEATURES COST</b>				<b>\$43,400</b>
<b>SUBTOTAL</b>				<b>\$690,755</b>
20% CONSTRUCTION CONTINGENCY				\$138,151.0
20% DESIGN, ENGINEERING + CONSTRUCTION ADMINISTRATION				\$165,781.20
<b>TOTAL ESTIMATED PROJECT COST</b>				<b>\$994,687</b>



**REQUEST FOR CITY COUNCIL ACTION**

<b>Meeting Date:</b>	November 21, 2024
<b>Item Name:</b>	Park Playground CIP
<b>Originating Department:</b>	Public Services
<b>Presented by:</b>	Jon Haukaas
<b>Previous Council Action (if any):</b>	The City Council discussed the proposed 2025 Capital Improvement Project to upgrade the playground equipment at Windmill Park. Feedback to staff on adjustments to the plan or any outreach programs.

<b>Item Type (X only one):</b>	Consent		Regular Session	X	Discussion Session	
--------------------------------	---------	--	-----------------	---	--------------------	--

**RECOMMENDATIONS/COUNCIL ACTION/MOTION REQUESTED** *(Include motion in proper format.)*

Review of short and long term playground upgrade recommendations.

**EXPLANATION OF AGENDA ITEM** *(Include a description of background, benefits, and recommendations.)*

Discussion began in early 2023 regarding the upgrades or replacement to the playground equipment at Windmill Park. Public outreach was conducted showing several options and gathering feedback of what the neighborhood would like to see in the future for this park. A plan was selected and later approved by the Park Board. As the Capital Improvement Budget was being developed by the City Council, questions were raised of why this park was selected and when should other park improvements be programmed. Playground equipment is typically considered to have useful life of approximately 20 years. After this amount of time the coatings and plastic begin to breakdown from use and exposure to the elements. The design of the play features change to improve safety and access by children of different abilities. Windmill Park playground was constructed in 2003 making it approximately 21 years old now. The attached presentation that was previously provided to the City Council includes pictures of the deterioration and other degradation of the playground equipment and the proposed new installation. The following chart lists out the playgrounds throughout the City, their original installation date, and a proposed replacement date. By planning for a replacement every year, the City will be able to maintain safety and accessibility for all the locations. Due to several being constructed in a single year, programmed replacement years vary from 18 to 22 years. We do have some flexibility to adjust the specific year of a park to adjust for excessive wear at any single location. Costs for replacement of each playground is estimated at \$205,000 to \$245,000 each.

<b>ID</b>	<b>Installed</b>	<b>Replacement Plan</b>
Windmill Creek Playground	1/1/2003	2025
Oakpointe Playground	1/1/2007	2021
Pinehill Playground	8/1/2007	2026
Fox Run Playground	1/1/2009	2028
Interlaken Playground	1/1/2009	2029
Wildhurst Playground	1/1/2009	2030
Brook Peterson Playground	8/1/2012	2031
City Square Playground	8/1/2012	2032
Clearwater Mills Playground	1/1/2014	2033
Legacy Village Playground	1/1/2014	2034
Sugarbush Playground	8/1/2014	2035
Bent Creek Playground	1/1/2015	2036
Crosswinds Playground	8/1/2015	2037
Hilks Lake Playground	1/1/2016	2038
Pheasant Ridge Playground	7/23/2018	2039

Orchard Park Playground	8/1/2022	2040
The Fields Playground	8/1/2022	2041
Waterford Playground	9/23/2022	2042
Lakeview Terrace Playground	3/6/2023	2043

Additional interim improvements are necessary to maintain safety at these installation. As you can see in the pictures, the mulch bedding has broken down and compressed to expose the base of the equipment as well as the edges of the surrounding curb. Special mulch must be used in playground installations. Based on past work, we estimate that replacing the mulch for each playground will cost between \$6,000 and \$10,000 and should be done every 5-8 years. Staff currently plans to redo the mulch at Fox Run Park as shown in the presentation photos. All other parks will be evaluated annually with our playground inspections and surface improvement will be conducted through our contracted services budget as needed.

**Attachments:**

1. [Windmill\\_Park\\_Playground\\_-\\_2025\\_CIP.pdf](#)

<b><i>FINANCIAL IMPLICATIONS:</i></b>		<b><i>ADVISORY BOARD RECOMMENDATIONS:</i></b>	
Funding Sources & Uses: PIR Cash			
Budget Information:		Planning Commission	
<input checked="" type="checkbox"/>	Budgeted	Parks and Recreation Board	
<input type="checkbox"/>	Non Budgeted	Safari Island Advisory Board	
<input type="checkbox"/>	Amendment Required	Other	



**Park Playgrounds  
Upgrade Needs  
Windmill Creek Park  
Fox Run Park**

# Playground Overview

Playgrounds typically programmed for a service life of approximately 20 years.

The City will begin to see a backlog of Playgrounds exceeding this timeline due to multiple installations in certain years.

ID	Installed	Replaced
Windmill Creek Playground	1/1/2003	
Oakpointe Playground	1/1/2007	3/1/2021
Pinehill Playground	8/1/2007	
Fox Run Playground	1/1/2009	
Interlaken Playground	1/1/2009	
Wildhurst Playground	1/1/2009	
Brook Peterson Playground	8/1/2012	
City Square Playground	8/1/2012	
Clearwater Mills Playground	1/1/2014	
Legacy Village Playground	1/1/2014	
Sugarbush Playground	8/1/2014	
Bent Creek Playground	1/1/2015	
Crosswinds Playground	8/1/2015	
Hilks Lake Playground	1/1/2016	
Pheasant Ridge Playground	7/23/2018	
Orchard Park Playground	8/1/2022	
The Fields Playground	8/1/2022	
Waterford Playground	9/23/2022	
Lakeview Terrace Playground	3/6/2023	

# Windmill Creek Park

## Overview

- Public Outreach conducted in 2023 to gather neighborhood feedback.



# Windmill Creek Park

## Overview

- Oldest Playground  
Installed in 2003
- Entire play area needs  
additional mulch.  
Approximately \$10,000



# Windmill Creek Park

## Old Style Swingsets

- Spread foot angled posts have a history of accidents from collisions.
- Recommend replace with central vertical single/double post.



# Windmill Creek Park

## 2-5 Year Old

- Child engagement features are broken.
- Overall structure showing signs of UV damage which makes the equipment brittle and prone to cracking.



# Windmill Creek Park

## Stairs and Platforms

- Protective coatings are worn and exposing underlying metal structure.



# Windmill Creek Park

## 'Rocker' Equipment

- Current recommendations are for the removal of this style play equipment.
- History of injuries.



# Windmill Creek Park

## Sandbox

- Park Board recommended removal of sandbox play area.
- Replace with slab and table area.



# Windmill Creek Park

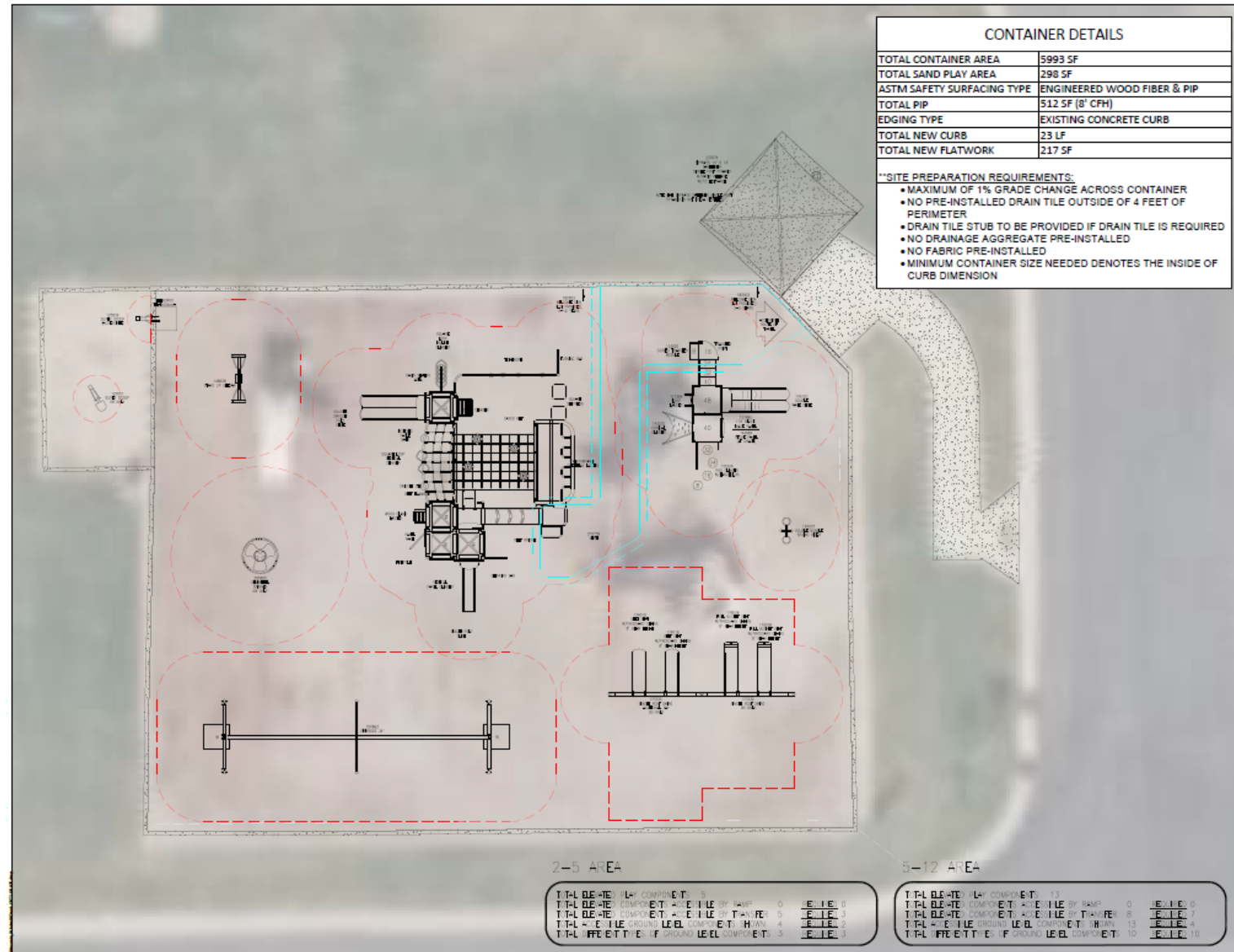
Park Board recommended alternative



# Windmill Creek Park

Reuses existing concrete border to minimize expense

2023 Cost Estimate was \$189,000



FLAGSHIP RECREATION  
1123 UPPER 33RD ST N  
LAKE ELMO, MN 55082  
763-550-7860  
FLAGSHIPPLAY.COM  
@FLAGSHIPPLAY



THIS PLAY AREA & PLAY EQUIPMENT IS DESIGNED FOR AGE RANGES AS NOTED ON PLAN.

Windmill Creek Park  
Option 2  
1140 S Windmill Creek, Waconia, MN 55387

SALES REPRESENTATIVE:  
Bailey Wolf

DESIGNED BY:  
JLT  
1/19/23

3/16" = 1'-0"

SHEET  
**LS101**



# Fox Run Park

## Overview

- Installed 2009.



# Fox Run Park

Generally in  
decent  
condition.



# Fox Run Park

## Structures

- Beginning to show UV damage
- Some rust evident on exposed fasteners.



# Fox Run Park

## Surface

- Entire play area needs additional mulch. Approximately \$10,000





# Questions